



## OrCAD X Live BOM

Providing advanced validation for your PCB supply chain

Electronic components are a crucial part of assembling and manufacturing printed circuit boards (PCBs). Any disruptions or shortages to their availability, lifecycle status, and compliance can significantly affect the supply chain, leading to production delays and increased costs. In the past few years, we've seen the impact that environmental regulations, geopolitical and trade tensions, unforeseen events, and technological advancements have had on the electronic supply chain – and it's time we stayed ahead of the curve. By moving away from the time-consuming and error-prone manual approach of navigating and updating our design's bill of materials (BOM), we can mitigate risk early on and ensure the timely production and delivery of products.

The key to ensuring a reliable and efficient manufacturing process is having real-time supply chain insights integrated with your design environment right from the start. Cadence® OrCAD® X Live BOM is a supply chain management solution that is seamlessly integrated within OrCAD X Capture and provides a comprehensive and dynamic dashboard that displays up-to-date information about the bill of materials in your design. It is powered by Sourcengine™,<sup>1</sup> which is an electronic component marketplace that provides real-time component insight for over 1 billion parts across 3600 suppliers and manufacturers.

With real-time synchronization and validation through Datalynq™,<sup>1,2</sup> OrCAD X can ensure that any changes made in the design are reflected within the BOM, helping

maintain visibility into component availability and costs throughout the product development process. Electrical engineers can access detailed data for each component, including manufacturer part number (MPN), its properties, and description. This comprehensive dashboard provides parametric data and essential information on component lifecycle status, obsolescence, and overall health status of the BOM. Engineers can share, customize, and view design variants helping them make informed decisions based on the available data helping them save time and money, and ensuring the on-time delivery of products.

1. Sourcengine™ and Datalynq™ are registered trademarks and platforms owned by Sourceability®, a global distributor of electronic components.  
2. Datalynq™ is a leading provider of commercial market intelligence for the electronic component supply chain industry.

## The key benefits of Live BOM include:

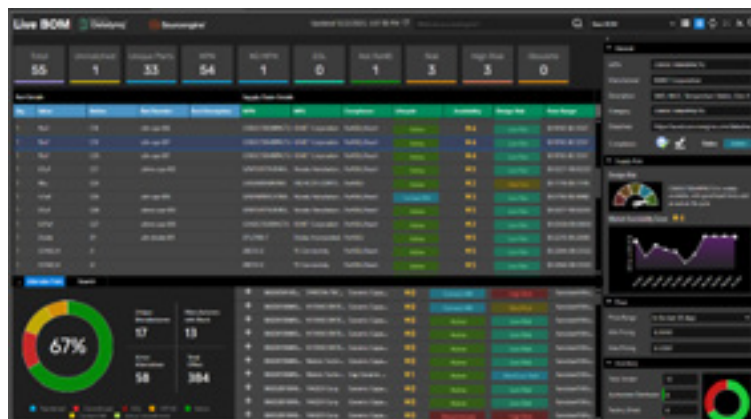
### Comprehensive Component Insight

- ▶ Access to over 1 billion parts across 3,500+ suppliers, along with ability to access technical parameters, REACH and ROHS material compliance, and data sheets.
- ▶ Easily replace high risk parts with form-fit-function (FFF) alternates and see supplier rating.



### Assess Design Risk

- ▶ Ability to compare pricing, availability, and delivery times.
- ▶ Identify obsolescence and shortage issues and generate compliance reports.
- ▶ Monitor and analyze BOM health with easy part scoring parameters to improve BOM grading.



### Forecast Availability

- ▶ Ability to track lead time, inventory, pricing, lifecycle status, cost avoidance, and shortage patterns or trends.
- ▶ Access to aggregated market intelligence and analytics.
- ▶ Receive notification updates on parts and assemblies.

**cadence**

Cadence is a pivotal leader in electronic design and computational expertise, using its Intelligent System Design strategy to turn design concepts into reality. Cadence customers are the world's most creative and innovative companies, delivering extraordinary electronic products from chips to boards to systems for the most dynamic market applications. [www.cadence.com](http://www.cadence.com)

© 2024 Cadence Design Systems, Inc. All rights reserved worldwide. Cadence, the Cadence logo, and the other Cadence marks found at [www.cadence.com/go/trademarks](http://www.cadence.com/go/trademarks) are trademarks or registered trademarks of Cadence Design Systems, Inc. All other trademarks are the property of their respective owners. 02/24 CPG/DS/PDF